

# MR ENTEROGRAPHY

Magnetic Resonance Enterography (MRE) is an advanced, accurate and noninvasive diagnostic imaging test to assess and evaluate certain gastrointestinal disorders, including inflammatory bowel diseases such as Crohn's disease, infectious enteritis, and small bowel lymphoma or lesions.

MRE DOES NOT USE RADIATION AND IS THE STUDY OF CHOICE, ESPECIALLY IN YOUNGER PATIENTS WHO NEED TO BE SCANNED NUMEROUS TIMES.

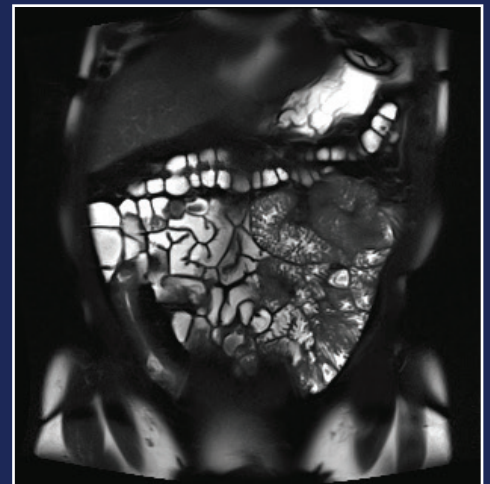
## PATIENT PREP:

The patient will mix 8 oz. of Miralax powder with 64 oz. of sports drink. The patient will drink 8 oz. of this mixture every 15 minutes starting at 5:00 p.m. the night prior to the procedure. Drink plenty of clear liquids to re-hydrate. Nothing by mouth (NPO) starting at 2:00 p.m. the day prior to the procedure.

The patient will be asked to pick up a 1 mg dose of Glucagon to be filled at a pharmacy of their choice. The patient should bring the Glucagon to their procedure to be administered before the start of their exam.

## WHAT TO EXPECT:

Patients will be asked to drink an oral contrast. This oral contrast allows the radiologist to evaluate the patient's small and large intestines. The patient will be asked to provide a brief medical history and the technologist will review the procedure with the patient. An IV will be placed in the patient's arm to inject a contrast material which differentiates between active inflammation and scarring. The exam is performed on a 3T MRI scanner and will take approximately 45 minutes. The radiologist will review the images and send the patient's doctor a written report.



*12cm of Distal Ileum demonstrates mucosal thickening*

**To schedule an MR enterography, call Charter Radiology at 443-917-2855.**



10700 CHARTER DR., SUITE 110  
COLUMBIA, MD 21044

116 WESTMINSTER PIKE, SUITE 104  
REISTERSTOWN, MD 21136

**443.917.2855**  
[www.CharterRadiology.com](http://www.CharterRadiology.com)